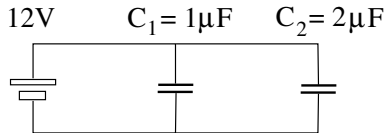


## Capacitor Circuit (2)



Consider the two capacitors connected in parallel.

- (a) Which capacitor has the higher voltage?
- (b) Which capacitor has more charge?
- (c) Which capacitor has more energy?



Consider the two capacitors connected in series.

- (d) Which capacitor has the higher voltage?
- (e) Which capacitor has more charge?
- (f) Which capacitor has more energy?

