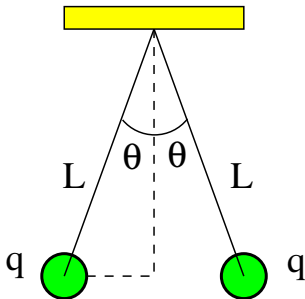


## Coulomb Force in Two Dimensions (5)



Two identical small charged spheres, each having a mass  $m = 30\text{g}$ , hang in equilibrium at an angle of  $\theta = 5^\circ$  from the vertical. The length of the strings is  $L = 15\text{cm}$ .

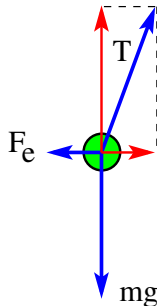
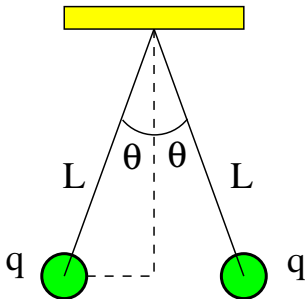


- Identify all forces acting on each sphere.
- Find the magnitude of the charge  $q$  on each sphere.

## Coulomb Force in Two Dimensions (5)



Two identical small charged spheres, each having a mass  $m = 30\text{g}$ , hang in equilibrium at an angle of  $\theta = 5^\circ$  from the vertical. The length of the strings is  $L = 15\text{cm}$ .



- Identify all forces acting on each sphere.
- Find the magnitude of the charge  $q$  on each sphere.