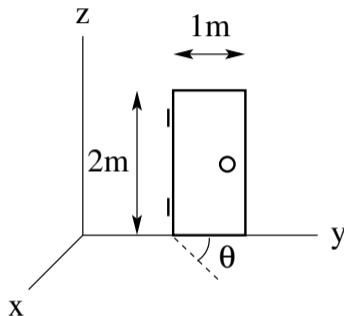


Electric Flux: Application (3)



The room shown below is positioned in an electric field $\vec{E} = (3\hat{i} + 2\hat{j} + 5\hat{k}) \text{ N/C}$.



- (a) What is the electric flux Φ_E through the closed door?
- (b) What is the electric flux Φ_E through the door opened at $\theta = 90^\circ$?
- (c) At what angle θ_1 is the electric flux through the door zero?
- (d) At what angle θ_2 is the electric flux through the door a maximum?